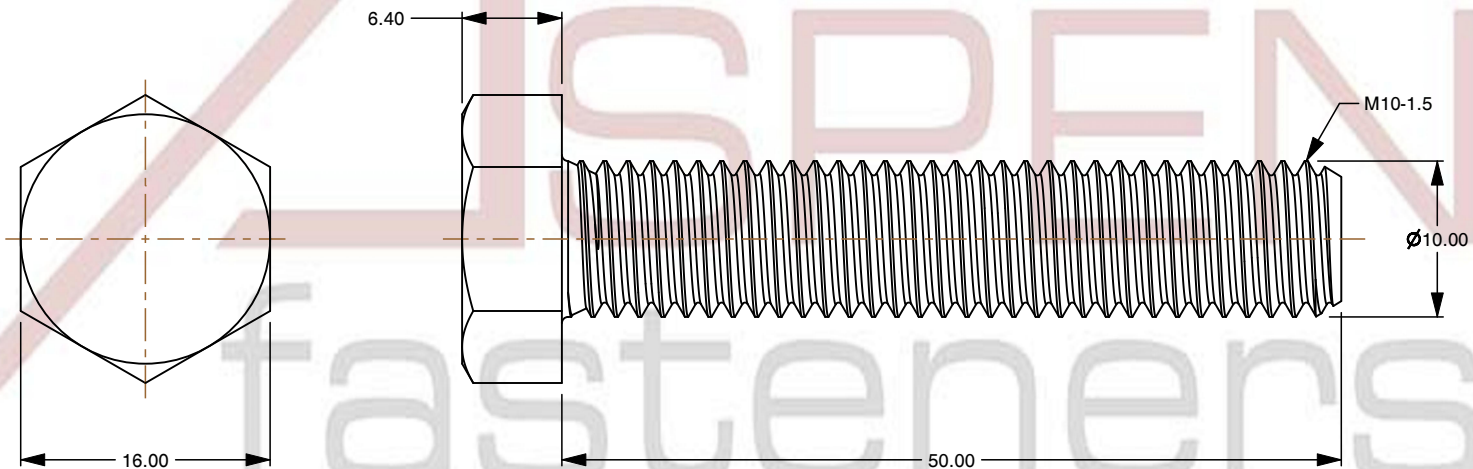
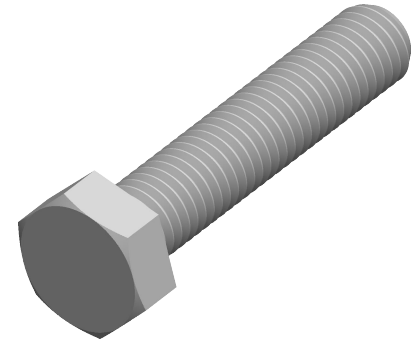



Notes :

1. Category: Cap Screws
2. System of Measurement: Metric
3. Head Style: Hex Head
4. Drive Style: External Hex Drive
5. Pitch: Coarse Thread
6. Thread Length: Full Thread
7. Thread Direction: Right-Hand Thread
8. Point: Chamfered Point
9. Material: Thermoplastic
10. Material Grade: Hard PVC
11. Coating: Uncoated
12. Coating Color: Grey
13. Standards and Specifications: ISO 4017



 www.aspenfasteners.com	<p>This file and any associated information and specifications are provided for reference and evaluation purposes only and is subject to change without notice. Aspen Fasteners Inc. makes no representations, warranties, or guarantees as to the appropriateness, accuracy, completeness, or suitability for any purpose of the file, information or specifications. You are solely responsible for the use of the file, information, or specifications.</p>	<p>This document is the property of Aspen Fasteners Inc. and the information it contains may not be reproduced, disclosed, or shared with any third party without the expressed written permission of Aspen Fasteners Inc.</p>	<p>PRODUCT NAME M10-1.5 X 50mm ISO 4017, Metric, Hex Head Cap Screws Bolts, Full Thread, PVC, Grey</p>	<p>UNIT MILLIMETERS</p>
			<p>PART NUMBER: TP017-1015X50</p>	<p>ISSUED 2024-07-10</p>
		<p>SCALE 2.062</p>		<p>SHEET 1 of 1</p>