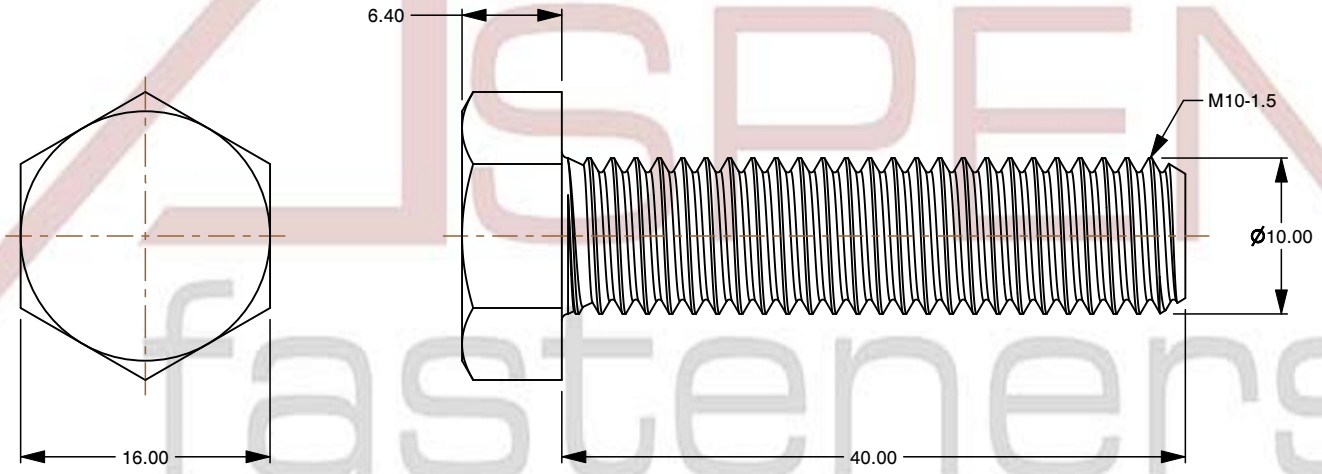
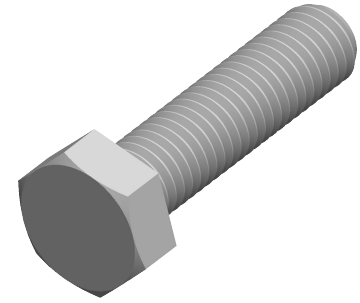


Notes :

1. Category: Cap Screws
2. System of Measurement: Metric
3. Head Style: Hex Head
4. Drive Style: External Hex Drive
5. Pitch: Coarse Thread
6. Thread Length: Full Thread
7. Thread Direction: Right-Hand Thread
8. Point: Chamfered Point
9. Material: Thermoplastic
10. Material Grade: Nylon 6/6 50 Percent Glass Filled
11. Coating: Uncoated
12. Coating Color: Black
13. Standards and Specifications: ISO 4017



This file and any associated information and specifications are provided for reference and evaluation purposes only and is subject to change without notice. Aspen Fasteners Inc. makes no representations, warranties, or guarantees as to the appropriateness, accuracy, completeness, or suitability for any purpose of the file, information or specifications. You are solely responsible for the use of the file, information, or specifications.

This document is the property of Aspen Fasteners Inc. and the information it contains may not be reproduced, disclosed, or shared with any third party without the expressed written permission of Aspen Fasteners Inc.

SCALE 2.062

PRODUCT NAME
 M10-1.5 X 40mm ISO 4017, Metric,
 Hex Head Cap Screws Bolts, Full Thread,
 Nylon 6/6 with Glass, Black

PART NUMBER: TP020-1015X40

UNIT
 MILLIMETERS

ISSUED
 2024-07-10

SHEET 1 of 1