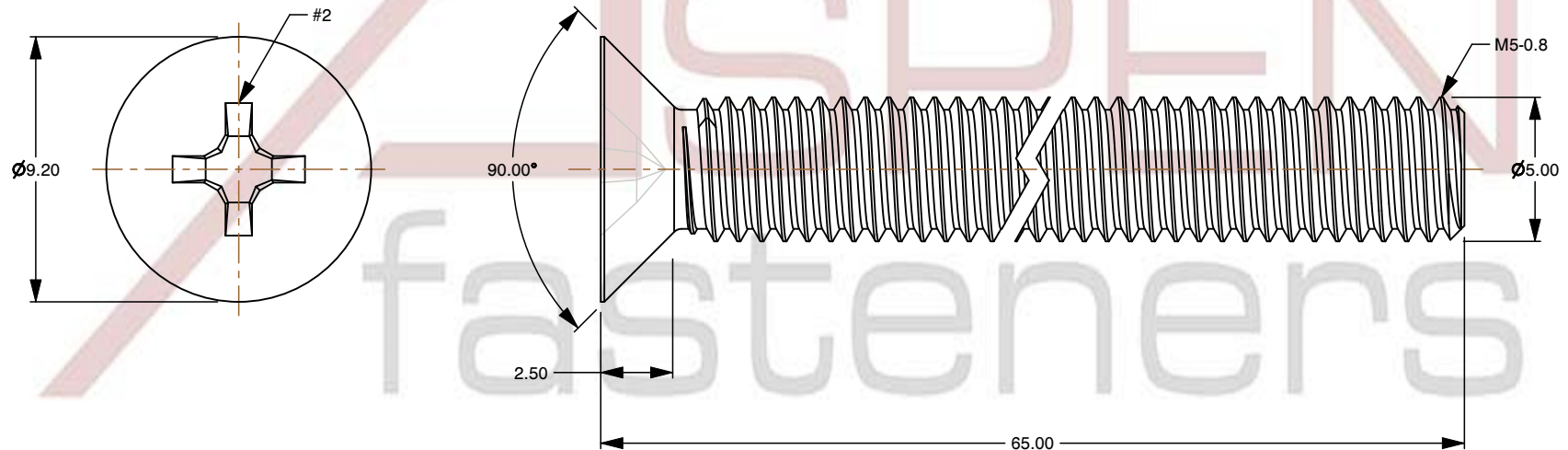
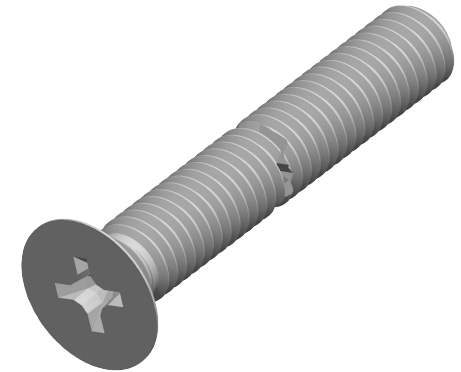



Notes :

1. Category: Machine Screws
2. System of Measurement: Metric
3. Head Style: Flat Countersunk Head
4. Head Style Detail: 90 Degree Countersink
5. Drive Style: Cruciform Recess Drive
6. Drive Detail: Phillips Type H
7. Thread Length: Full Thread
8. Thread Direction: Right-Hand Thread
9. Material: Thermoplastic
10. Material Grade: Polyamide
11. Coating: Uncoated
12. Coating Color: Natural
13. Standards and Specifications: DIN 965 / ISO 7046



 www.aspenfasteners.com	This file and any associated information and specifications are provided for reference and evaluation purposes only and is subject to change without notice. Aspen Fasteners Inc. makes no representations, warranties, or guarantees as to the appropriateness, accuracy, completeness, or suitability for any purpose of the file, information or specifications. You are solely responsible for the use of the file, information, or specifications.	This document is the property of Aspen Fasteners Inc. and the information it contains may not be reproduced, disclosed, or shared with any third party without the expressed written permission of Aspen Fasteners Inc.	PRODUCT NAME M5-0.8 X 65mm DIN 965 / ISO 7046, Metric, Machine Screws, Flat Phillips Drive, Polyamide	UNIT MILLIMETERS
			SCALE 4.141	PART NUMBER: TP072-508X65
			SHEET 1 of 1	