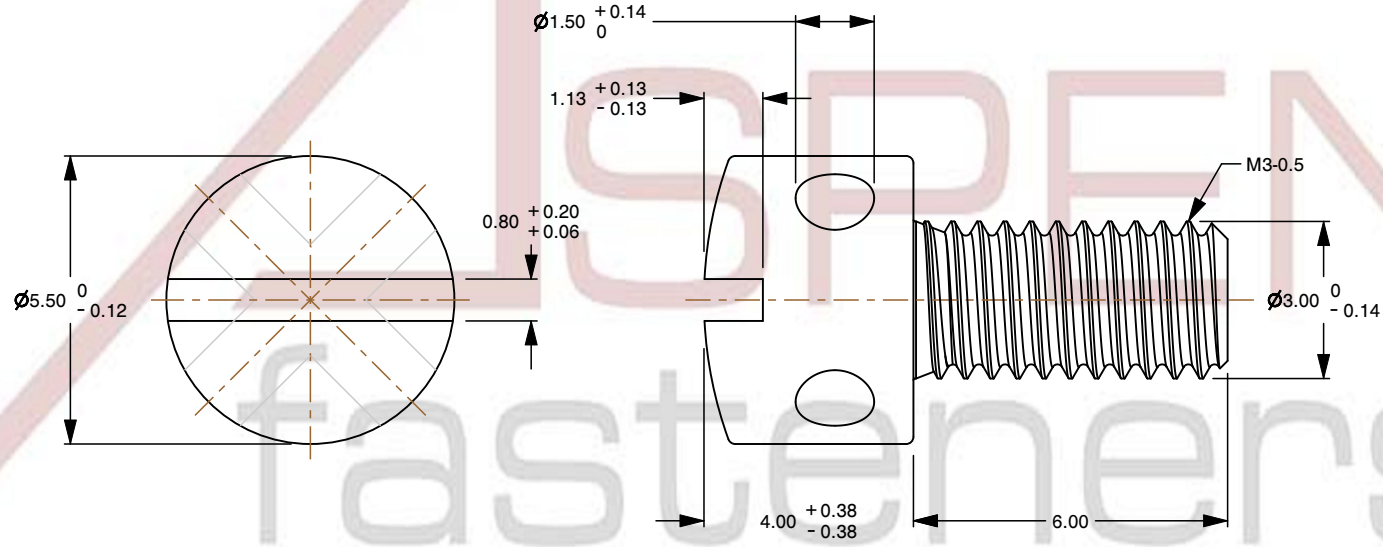
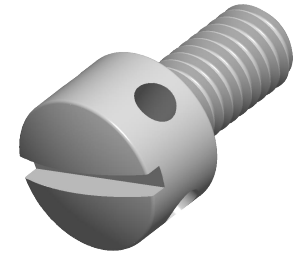


Notes :

1. Category: Capstan Screws
2. System of Measurement: Metric
3. Head Style: Cylindrical Head
4. Head Style Detail: Drilled Head
5. Drive Style: Slotted Drive
6. Thread Direction: Right-Hand Thread
7. Material: Steel
8. Material Grade: Class 5.8 Steel
9. Coating: Zinc Plated
10. Coating Color: Clear
11. Standards and Specifications: DIN 404



This file and any associated information and specifications are provided for reference and evaluation purposes only and is subject to change without notice. Aspen Fasteners Inc. makes no representations, warranties, or guarantees as to the appropriateness, accuracy, completeness, or suitability for any purpose of the file, information or specifications. You are solely responsible for the use of the file, information, or specifications.

This document is the property of Aspen Fasteners Inc. and the information it contains may not be reproduced, disclosed, or shared with any third party without the expressed written permission of Aspen Fasteners Inc.

SCALE 6.927

PRODUCT NAME
M3-0.5 X 6mm DIN 404, Metric,
Capstan Screws, Slotted Drive, Steel, Zinc Plated

PART NUMBER: ME682-305X6

UNIT
MILLIMETERS

ISSUED
2024-09-28

SHEET 1 of 1