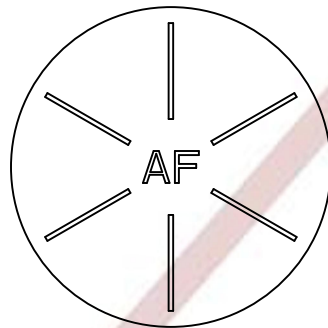
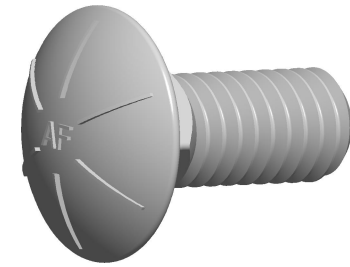


Notes :

1. Category: Carriage Bolts
2. System of Measurement: Inch
3. Head Style: Round Head
4. Head Style Detail: Square Neck
5. Head Markings: Six radial lines 60 degrees apart and manufacturer ID
6. Thread Length: Full Thread
7. Thread Direction: Right-Hand Thread
8. Material: Steel
9. Material Grade: Grade 8 Steel
10. Coating: Uncoated
11. Standards and Specifications: ASME B18.5 and SAE J429

"AF" IS MEANT TO REPRESENT THE MANUFACTURER'S ID MARKING
AND WILL VARY DEPENDING ON THE MANUFACTURER OF THE PARTS.



HEAD MARKING

