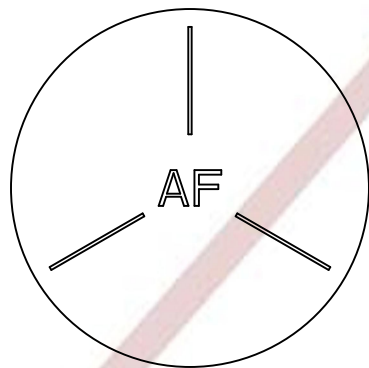
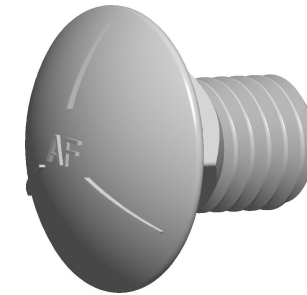


**Notes :**

1. Category: Carriage Bolts
2. System of Measurement: Inch
3. Head Style: Round Head
4. Head Style Detail: Square Neck
5. Head Markings: Three radial lines 120 degrees apart and manufacturer ID
6. Thread Length: Full Thread
7. Thread Direction: Right-Hand Thread
8. Material: Steel
9. Material Grade: Grade 5 Steel
10. Coating: Zinc Plated
11. Coating Color: Clear
12. Standards and Specifications: ASME B18.5 and SAE J429

"AF" IS MEANT TO REPRESENT THE MANUFACTURER'S ID MARKING  
AND WILL VARY DEPENDING ON THE MANUFACTURER OF THE PARTS.



HEAD MARKING

