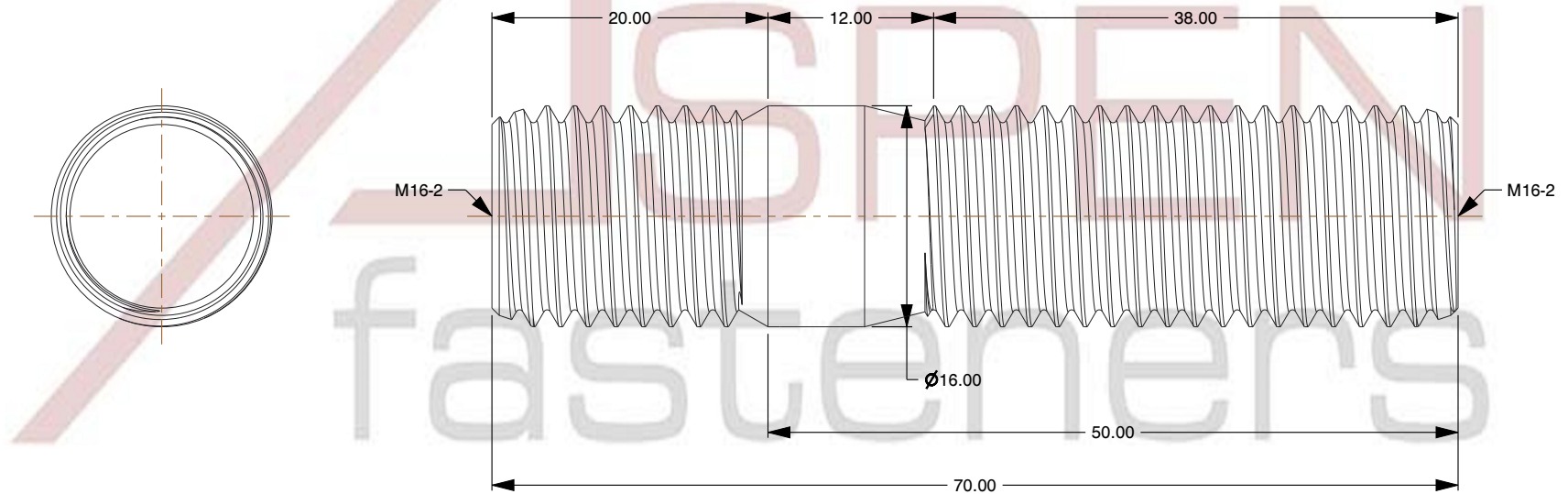
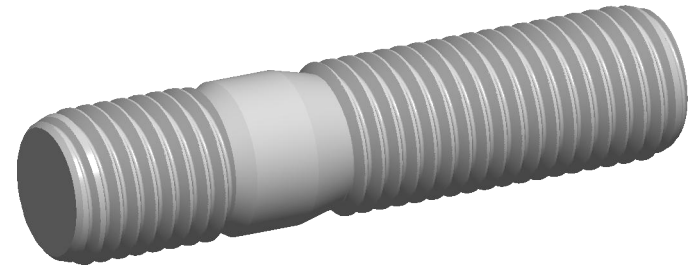


NOTES:

1. Category: Studs, Double-Ended
2. System of Measurement: Metric
3. Form and Design: Screw-in End 1.25 X Diameter
4. Thread Direction: Right-Hand Thread
5. Material: Steel
6. Material Grade: Class 8.8 Steel
7. Coating Color: Clear
8. Coating: Zinc Plated
9. Standards and Specifications: DIN 939



This file and any associated information and specifications are provided for reference and evaluation purposes only and is subject to change without notice. Aspen Fasteners Inc. makes no representations, warranties, or guarantees as to the appropriateness, accuracy, completeness, or suitability for any purpose of the file, information or specifications. You are solely responsible for the use of the file, information, or specifications.

This document is the property of Aspen Fasteners Inc. and the information it contains may not be reproduced, disclosed, or shared with any third party without the expressed written permission of Aspen Fasteners Inc.

SCALE 0.078

PRODUCT NAME
 M16-2.0 X 50mm DIN 939, Metric, Studs,
 Double-Ended, Screw-in End 1.25 X Diameter,
 Class 8.8 Steel, Zinc Plated

PART NUMBER: ME726-1620X50

UNIT
 MILLIMETERS

ISSUED
 2023-11-23

SHEET 1 of 1